



EURO-NORM **lightline**





lightline - The Light-Weight Euro Standard Range

The light-weight Euro standard containers in the lightline range are versatile in use and extremely sturdy thanks to their double-walled design. The lightline containers have an ergonomic handle and are ideally suited for manual handling. The closed lightline containers are also available in a translucent form. This way, one can always immediately tell if a container is full or empty, even when they are sealed or stacked.



lightline - Plus Points at a Glance!

- + available in the basic sizes 400 x 300 mm and 600 x 400 mm
- + as a closed and perforated version
- + stability through double-walled design
- + fitted with ergonomically shaped handles
- + suitable for manual handling and automated transport of light cargo
- + cleaning-friendly thanks to drainage holes
- + made from PP-C (polypropylene copolymer)
- + 100 % recyclable



With Drainage Holes



Closed Version



Perforated Version



Sturdy Double Wall



400 x 300 mm

Outer Dimensions (in mm)	Sides		Bottom		Volume	Weight	Article No.
	closed	perforated	closed	perforated			

	400 x 300 x 120	✓		✓	11,4 l	580 g	1244/000314
	370 x 270 x 118						

	400 x 300 x 220	✓		✓	20 l	800 g	2247/000300
	369 x 270 x 218						

600 x 400 mm

	600 x 400 x 120	✓		✓	24 l	1,010 g	1266/000300
	568 x 368 x 117						

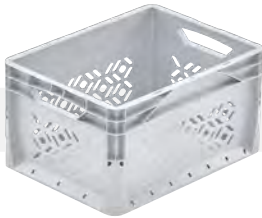
	600 x 400 x 220	✓		✓	46 l	1,380 g	2267/000300
	568 x 368 x 217						

	600 x 400 x 320	✓		✓	66 l	1,800 g	3267/000300
	568 x 368 x 317						



Outer Dimensions (in mm)	Sides		Bottom		Volume	Weight	Article No.
	closed	perforated	closed	perforated			

400 x 300 mm



400 x 300 x 220		✓	✓		21 l	765 g	2245.000314
370 x 270 x 218							

600 x 400 mm



600 x 400 x 120		✓		✓	24 l	990 g	1265.343400
568 x 368 x 117							



600 x 400 x 220		✓		✓	46 l	1,300 g	2265.343400
568 x 368 x 217							





600 x 400 x 320		✓		✓	66 l	1,650 g	3265.343400
568 x 368 x 317							




400 x 300 mm


Outer Dimensions (in mm)	Sides		Bottom		Volume	Weight	Article No.
	closed	perforated	closed	perforated			


	400 x 300 x 120	✓		✓	11,4 l	580 g	1244/000314
	370 x 270 x 118						

	400 x 300 x 220	✓		✓	24 l	790 g	2247/000300
	369 x 270 x 218						

600 x 400 mm

	600 x 400 x 120	✓		✓	24 l	1.010 g	1266/000300
	568 x 368 x 117						

	600 x 400 x 220	✓		✓	46 l	1.380 g	2267/000300
	568 x 368 x 217						

	600 x 400 x 320	✓		✓	66 l	1.800 g	3267/000300
	568 x 368 x 317						



For the Simple and Quick Removal of Goods

The lightline Euro-standard containers are available with a practical removal opening on the front or long side or a transparent flap.

As such, goods can be easily removed even from stacked containers. For containers with a flap, the contents of the container can be recognised through the transparent material.



Outer Dimensions (in mm)	Opening		Lockable Flap		Volume	Weight	Article No.
	short side	long side	short side	long side			
Inner Dimensions (in mm)							

400 x 300 mm



400 x 300 x 220	✓			20 l	770 g	2248/000300
369 x 270 x 218						



400 x 300 x 220			✓	20 l	900 g	2248/000300
369 x 270 x 218						



600 x 400 mm

Outer Dimensions (in mm)	Opening		Lockable Flap		Volume	Weight	Article No.
	short side	long side	short side	long side			



600 x 400 x 320		✓			66 l	1.700 g	3268/000300
568 x 368 x 317							



600 x 400 x 320				✓	66 l	1.950 g	3268/000300
568 x 368 x 317							



600 x 400 x 320	✓				66 l	1.750 g	3269/000300
568 x 368 x 317							



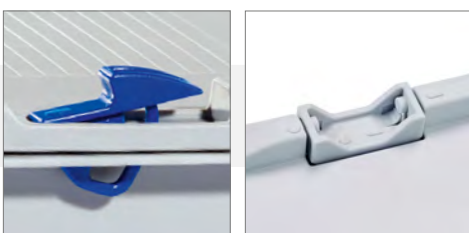
600 x 400 x 320				✓	66 l	1.950 g	3269/000300
568 x 368 x 317							



	Outer Dimensions (in mm)	Description	Weight	Article No.
400 x 300 mm				
	400 x 300	Loose lid, without container	330 g	0078
600 x 400 mm				
	600 x 400	Loose lid, without container	630 g	0077
400 x 300 mm				
	400 x 300	Hinged lid with assembly accessories consisting of two grey hinges and two blue locking bars, pre-mounted on the lid	340 g	0081
600 x 400 mm				
	600 x 400	Hinged lid with assembly accessories consisting of two grey hinges and two blue locking bars, pre-mounted on the lid	650 g	0082

Assembly Accessories

Artikelnummer



Assembly accessories
Locking bar, per piece
Hinge, per piece

7240
7242



Loose Lids Transparent & Hinged Lids Transparent

	Outer Dimensions (in mm)	Description	Weight	Article No.
400 x 300 mm				
	400 x 300	Loose lid, without container	260 g	0097
600 x 400 mm				
	600 x 400	Loose lid, without container	480 g	0098
400 x 300 mm				
	400 x 300	Hinged lid with assembly accessories consisting of two white hinges and two white locking bars, pre-mounted on the lid	260 g	0091
600 x 400 mm				
	600 x 400	Hinged lid with assembly accessories consisting of two white hinges and two white locking bars, pre-mounted on the lid	480 g	0092
Assembly Accessories				Article No.
		Assembly accessories Locking bar, per piece Hinge, per piece		7240 7242



bekuplast GmbH · Industriestraße 1 · 49824 Ringe · Germany
+49 5944 9333-0 · info@bekuplast.com · www.bekuplast.com